

P12000 400V 50Hz #AVR #IPP



Main Features

Frequency	Hz	50
Voltage	V	400/230
Power factor	cos ϕ	0.8
Phase		3

Power Rating

Emergency Standby Power ESP	kVA	13.9
Emergency Standby Power ESP	kW	11.1
Continuous power COP	kVA	11.8
Continuous power COP	kW	9.5

Single Phase Power Rating

Single phase Maximum Power	kVA	4.6
Single phase continuous power COP	kVA	4.0

Ratings definition (According to standard ISO8528 1:2005)

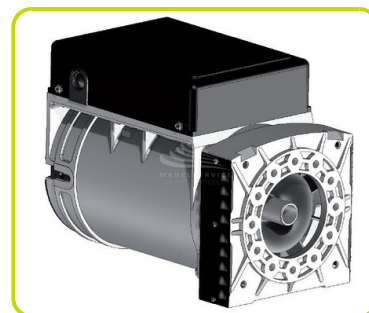
Engine specifications

Engine Brand		Honda
Model		GX630
[50Hz] Exhaust emission level		Stage V
Engine cooling system		Air
Displacement	cm ³	688
Aspiration		Natural
Operating Speed-Nominal	rpm	3000
Speed governor		Mechanical
Fuel		Petrol
Oil capacity	l	1.9
Starting system		Electric



Alternator Specifications

Type		Brushes
Class		H
IP protection		23
Poles		2
Frequency	Hz	50
Voltage	V	400
Voltage regulation system		Electronic
Standard AVR		ASR



Dimensional data

Length	(L) mm	990
Width	(W) mm	602
Height	(H) mm	826
Dry weight	kg	188
Fuel tank capacity	l	24

Autonomy

Fuel consumption at 75% of Load	l/h	4.23
Fuel consumption at 100% of Load	l/h	5.64
Running time at 75% of load	h	5.67
Running time at 100% of load	h	4.26

Noise level

Guaranteed noise level (LWA)	dB(A)	89
Noise pressure level @ 7 m	dB(A)	61

GENSET CONTROL PANELS (IPP)

Mounted on the genset and complete of: instrumentation, control, protection of the generating set and sockets.



COMMANDS

- Start selector switch with key: OFF - ON - START

INSTRUMENTATION (DGT)

- Voltmeter
- Hours-counter
- Frequency meter

PROTECTIONS

- Circuit breaker
- Isometer protection (**IPP**)
- Oil Guard

SOCKET TYPE

SCHUKO 230V 16A IP54	1
2P+T CEE 230V 16A IP44	2
3P+N+T CEE 400V 16A IP44	1

ACCESSORIES

TRANSPORTATION KIT

with folding handles

